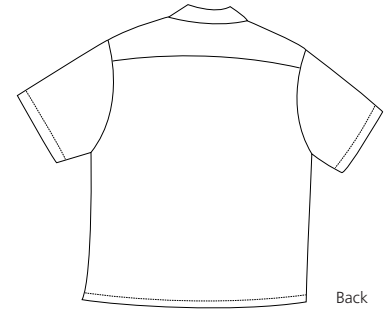
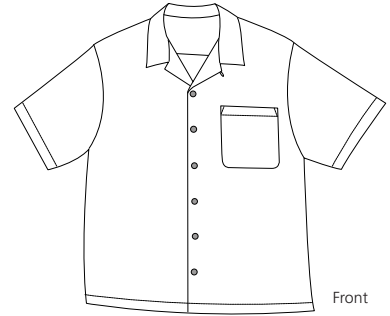


# Palm Tree Jaquard Camp Shirt

PORT AUTHORITY®  
SIGNATURE








**S532**

- \* 100% rayon \* Open collar \* Side vents \* Straight bottom hem
- \* Coconut shell buttons \* Single patch pocket

**Care Instructions:**  
Machine wash cold.  
Wash with like colors.  
Do not bleach. Line Dry.  
Cool iron reverse side as needed.

| Finished measurements in inches |           |           |        |        |        |        |        |        |
|---------------------------------|-----------|-----------|--------|--------|--------|--------|--------|--------|
| Size                            | XS        | S         | M      | L      | XL     | 2XL    | 3XL    | 4XL    |
| Chest                           | 20        | 21.5      | 23     | 24.5   | 26     | 27.5   | 30.5   | 33.5   |
| Body                            | 25.5      | 27.5      | 29.5   | 30.5   | 31.5   | 32.25  | 33.5   | 34     |
| Sleeve                          | 8.75      | 9.75      | 10.75  | 11.25  | 11.75  | 12.25  | 12.75  | 13.25  |
| Pocket                          | 5.62x5.87 | 5.62x5.87 | 5.75x6 | 5.75x6 | 5.75x6 | 5.75x6 | 6x6.25 | 6x6.25 |

Chest width measured 1" below arm hole. Body length measured from back neck seam to hem.  
Sleeve length measured from shoulder seam to hem. Pocket WxH.

| Colors  |              |
|---|--------------|
|  | Black        |
|  | Celery       |
|  | Dusty Blue   |
|  | Dusty Yellow |
|  | Khaki        |

**Please Note:**  
Colors shown are approximate and for reference only. For closest match see PMS colors, or for exact match, returnable samples and grommited samples are available.

| Color chart |               |           |            |              |           |
|-------------|---------------|-----------|------------|--------------|-----------|
| Base colors | Black         | Celery    | Dusty Blue | Dusty Yellow | Khaki     |
| Textile PMS | 19-4006TC     | 15-6474TC | 17-3915TC  | 12-0720TC    | 15-1306TC |
| General PMS | Process Black | 7493C     | 652C       | 460C         | 7535C     |